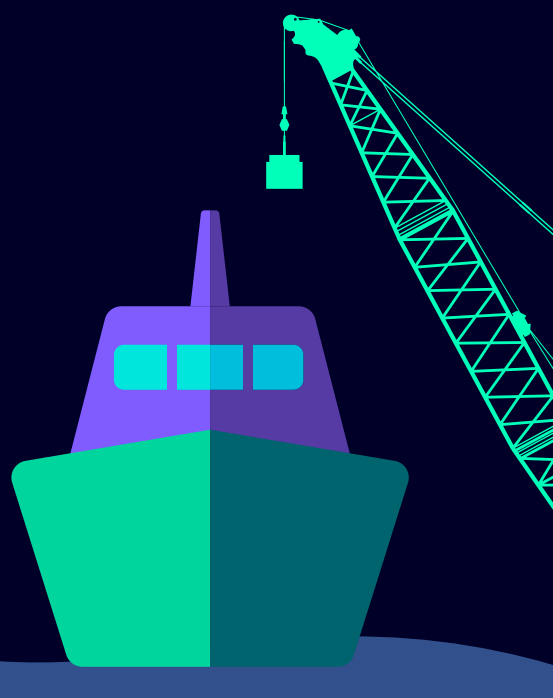


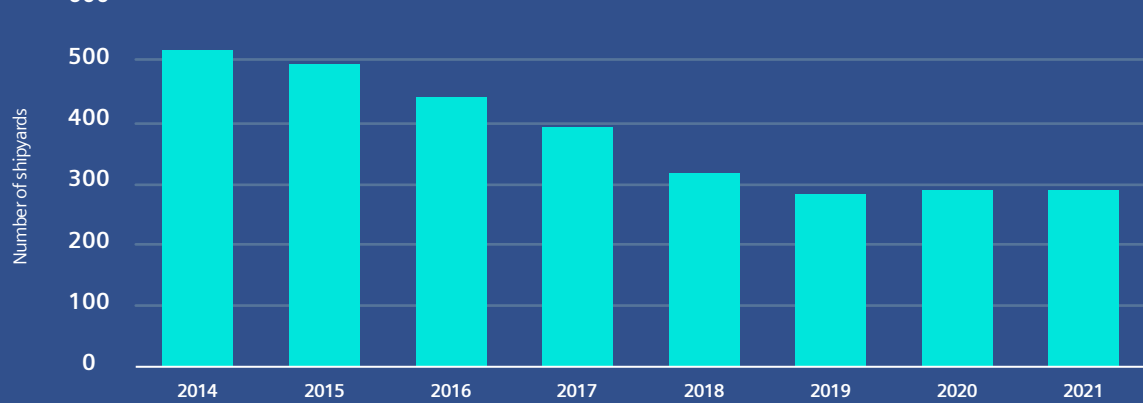
Set a course for the digital shipyard



Trends and challenges for ship construction

Increased global competition

Shipbuilders are tasked to deliver ships with a lower total cost of ownership and a shorter time to market.

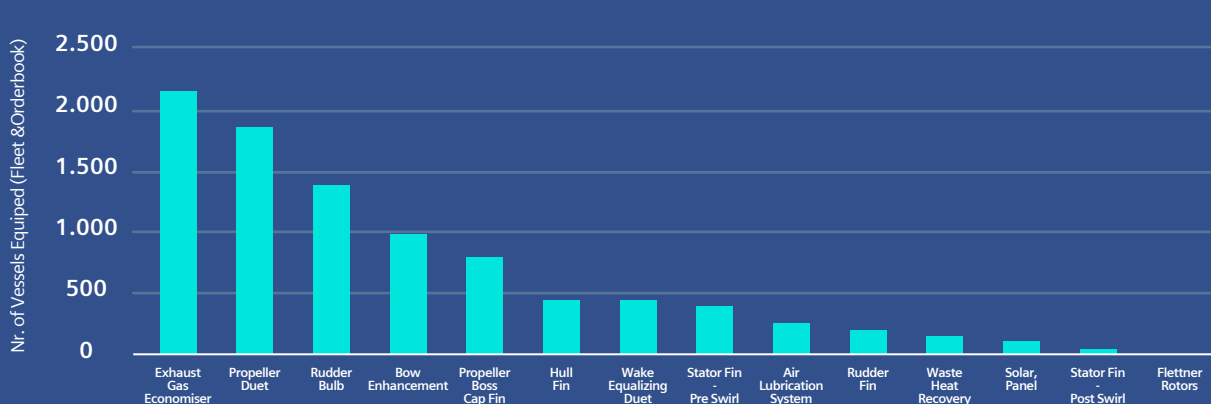


As a result of intense competition, the number of overall active shipyards worldwide has decreased by 45% in less than 10 years.

Data source: Statista

Increased ship complexity

Shipbuilders are delivering ships that meet both the customer's requirements and sustainability targets.



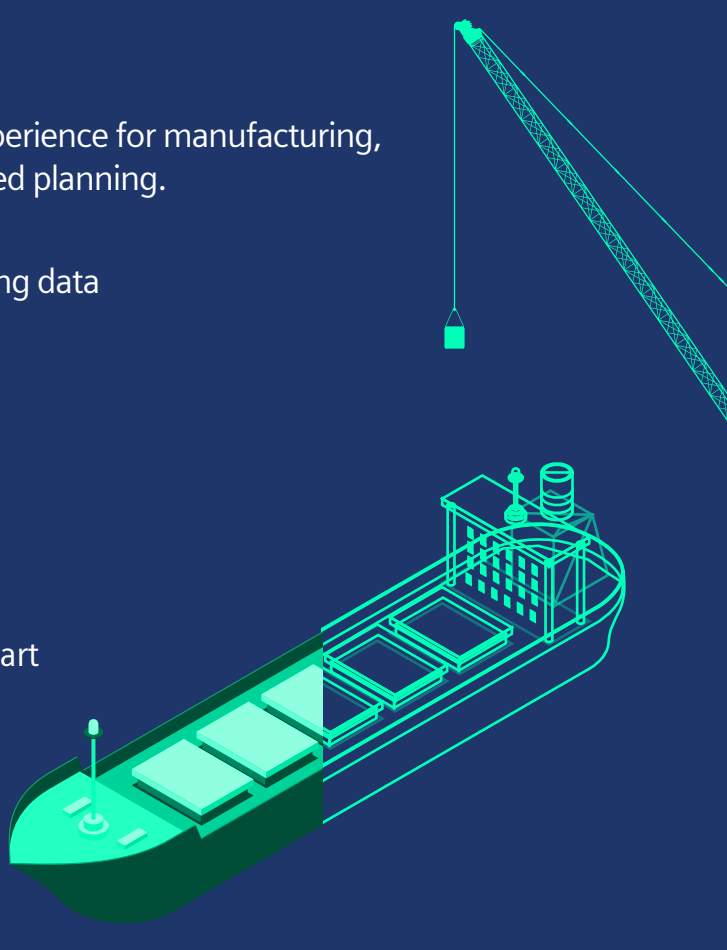
New technologies are being introduced to meet stringent sustainability goals.

Source: Clarksons Research

Optimize shipbuilding

A digital shipyard has a streamlined and intuitive PLM experience for manufacturing, production, simulation, design, automation and integrated planning.

- Manage all design, engineering and manufacturing data in one connected environment
- Simulate and optimize manufacturing processes
- Feed production data back to the design teams
- Adopt advanced production technologies and smart manufacturing processes
- Manage quality from design to construction
- Optimize yard layout and workforce efficiency



Realize the digital shipyard with Siemens Digital Ship Construction

Step 1: Connect design, construction and logistics processes in a centralized data backbone and link to enterprise software tools

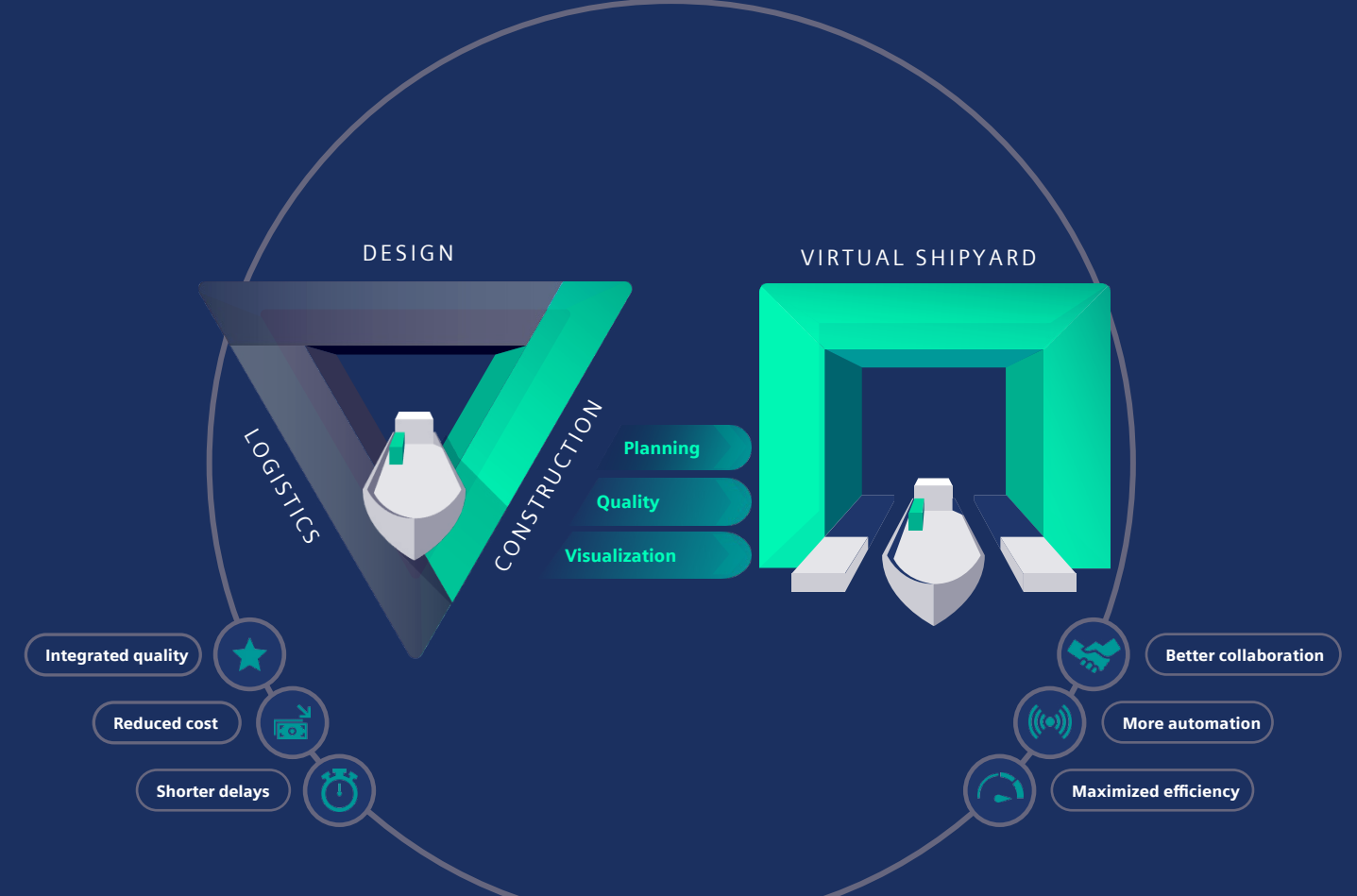
- Remove silos and barriers between these areas
- Seamless information sharing
- No time wasted, fewer errors

Step 2: Create maximum efficiency on the construction floor

- One single planning environment (mBOM and BOP)
- Integrate best practices in quality management
- Use simulation to assess and validate processes faster

Step 3: Adopt a virtual shipyard to optimize layout and utilization of the yard and equipment.

- Allow realistic simulation and validation of changes
- Adopt innovative technologies more easily



Smooth sailing ahead

- Maximize efficiency and productivity in the construction process
- Build complex vessels faster by eliminating process inefficiency and planning incoherence
- Integrate closed-loop quality management to minimize quality issues
- Become a forward-thinking technology leader in a competitive market

What's next?

With the Siemens Xcelerator portfolio and the digital ship construction thread, shipbuilders can maximize productivity on the construction floor and deliver advanced, cutting-edge vessels in less time.

[More information](#)

